

### Features



Figure 1: Wall Mount Strobes

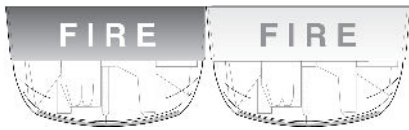


Figure 2: Ceiling Mount Strobes

### Visible only (V/O) 24 VDC notification appliances with high output xenon strobe, available for wall or ceiling mount:

- Intensity is selectable as 15, 30, 75, or 110 candela with visible selection jumper secured behind strobe housing
- Operation is compatible with ADA requirements (refer to [Installation Reference, Surface or Semi-Flush Wall Mounting](#))
- Polarized input allows connection to compatible reverse polarity, supervised notification appliance circuit (NAC)
- Regulated circuit design ensures consistent flash output and provides controlled inrush current
- Rugged, high impact, flame retardant thermoplastic housings are available in red or white with clear lens
- Listed to UL 1971 and ULC S526
- NEMA 1 rated. See [Product Selection](#) for more information

### Strobes provide synchronized flash for use with:

- Simplex fire alarm control panels with NACs selected to provide strobe synchronization or SmartSync two-wire control
- 4009 IDNet NAC Extenders
- Separate strobe Synchronization Modules that are available for Class B or Class A operation
- Separate SmartSync Control Modules (SCMs) that provide Class B or Class A output from conventional NAC inputs

### Strobe housings provides flexible, easy, and convenient semi-flush or surface wall mounting:

- Rear of housing does not extend into box
- Wall mount strobes easily mount to single gang, double gang, or 4-inch square outlet box
- Ceiling mount strobes mount to single gang boxes

### Wall mount strobe features:

- Wiring terminals are accessible from the front of the housing providing easy access for installation, inspection, and testing
- Covers are available separately to convert housing color

### Optional adapters and wire guards:

- Wall mount strobe adapters are available to cover surface mounted electrical boxes and to adapt to 2975-9145 boxes
- UL listed red wire guards are available for wall or ceiling mount strobes\*

### Description

**Multi-Candela TrueAlert synchronized strobes** provide convenient installation to standard electrical boxes. The enclosure designs are both impact and vandal resistant and provide a convenient strobe intensity selection. Since each model can be selected for intensity output, on-site model inventory is minimized and changes encountered during construction can be easily accommodated.

**Wall mount** strobe housings are a one-piece assembly (including lens) that mounts to a single or double gang, or 4" square standard electrical box. The cover can be quickly removed (a tool is required) and covers are available separately for color conversion.

**Ceiling mount** strobes install using standard single gang electrical boxes. Color choice is determined by model number.

### Strobe Intensity Selection

During installation, a selection plug at the back of the housing determines the desired strobe intensity. An attached flag with black letters on a highly visible yellow background allows the selected intensity to be seen at the side of the strobe lens.

### Strobe Application Reference

Proper selection of visible notification is dependent on occupancy, location, local codes, and proper applications of: the *National Fire Alarm Code* (NFPA 72), ANSI A117.1; the appropriate model building code: BOCA, ICBO, or SBCCI; and the application guidelines of the Americans with Disabilities Act (ADA).

### Synchronized Strobes

**Multiple Strobes.** When multiple strobes and their reflections can be seen from one location, synchronized flashes reduce the probability of photo-sensitive reactions as well as the annoyance and possible distraction of random flashing. These multi-candela strobes are synchronized over a two-wire circuit when connected to compatible NACs, to compatible Synchronized Flash Modules, or to SmartSync Control Modules.

### SmartSync Two-Wire Control

Some applications desire the audible notification appliances to be capable of being silenced before the alarm condition is reset (on-until-silenced) while the visible notification appliances are kept activated until the alarm condition is reset (on-until-reset). SmartSync operation mode provides this function using a single circuit (two-wire operation).

### SmartSync Control Sources

#### SmartSync two-wire control is available from:

4006, 4007ES Hybrid, 4008, 4010, 4010ES, 4100ES, and 4100U Fire Alarm Control Panels (refer to individual product data sheets for more information)

4009 IDNet NAC Extenders (refer to data sheet [S4009-0002](#))

SmartSync Control Module (SCM) Model 4905-9938 (refer to data sheet [S4905-0003](#))

**Additional SmartSync** compatible notification appliances include separate horns and combination horn/strobe notification appliances.

For more information refer to installation instructions, 579-548.

**Product Selection**

**Table 1: Multi-Candela Visible Notification Appliances (Strobes)**

SKU	Mounting	Housing Color	Lettering	Description
4906-9101 *	Wall	Red	FIRE (white)	Multi-candela strobe with intensity selectable as: 15, 30, 75, or 110 candela; synchronized flash rate; SmartSync two-wire control compatible
4906-9103 *		White	FIRE (red)	
4906-9102 *	Ceiling	Red	FIRE (white)	
4906-9104 *		White	FIRE (red)	
4906-9114 *		Red	ALERT (white)	
4906-9115 *		White	ALERT (red)	
4906-9116 *		Red	Blank (white)	
4906-9117 *		White	Blank (red)	

\* NEMA 1 rated when used with 4095-9931 adaptor plate and 2975-9145 back box.

**Table 2: Wall Mount Strobe Adapters**

SKU	Description	Dimensions
4905-9937	Red Surface Mount Adapter Skirt; use to cover 1-1/2" (38 mm) deep surface mounted boxes	5-3/8" H x 5-1/4" W x 1-5/8" D (136 mm x 133 mm x 41 mm) Total depth with strobe = 4-3/8" (111 mm)
4905-9940	White Surface Mount Adapter Skirt; use to cover 1-1/2" (38 mm) deep surface mounted boxes	5-3/8" H x 5-1/4" W x 1-5/8" D (136 mm x 133 mm x 41 mm) Total depth with strobe = 4-3/8" (111 mm)
4905-9931 **	Red Adapter Plate for mounting to Simplex 2975-9145 box (typically for retrofit, may be mounted vertical or horizontal)	8-5/16" x 5-3/4" x 0.060" Thick (211 mm x 146 mm x 1.5 mm)
2975-9145 **	Red Mounting Box, requires Adapter Plate 4905-9931	7-7/8" x 5-1/8" x 2-3/4" D (200 mm x 130 mm x 70 mm)

\*\* NEMA 1 rated.

**Table 3: Ceiling Mount Strobe Adapter**

SKU	Description	Dimensions
4905-9910	Surface Mount Adapter Plate; zinc plated; required for mounting to handy box; not needed when using 4905-9926 guard	4-7/8" x 3-1/8" x 0.060" D (124 mm x 79 mm x 1.5)

**Table 4: Synchronization Modules (refer to data sheet S4905-0003 for additional information)**

SKU	Description	Dimensions
4905-9914	Class B Synchronized Flash Module; epoxy encapsulated with in/out 18 AWG (0.82 mm <sup>2</sup> ) wire leads, rated for 2 A NAC, requires 5 mA for power	1-3/8" x 2-7/16" x 13/16" (35 mm x 62 mm x 20 mm)
4905-9922	Class A Synchronized Flash Module; epoxy encapsulated with in/out 18 AWG (0.82 mm <sup>2</sup> ) wire leads, rated for 2 A NAC, requires 5 mA for power	1-3/8" x 2-7/16" x 13/16" (35 mm x 62 mm x 20 mm)
4905-9938	SmartSync Control Module with Class B or Class A output; mounts in 4" (102 mm) square box	4" x 4-1/8" x 1-1/4" D (102 mm x 105 mm x 32 mm)

**Table 5: Replacement Covers and Guards**

SKU	Description	Dimensions
4905-9992	Red cover with white "FIRE" lettering	For Wall mount strobes 5-1/8" H x 5" W x 1-1/2" D (130 mm x 127 mm x 38 mm)
4905-9993	White cover with red "FIRE" lettering	
4905-9961 *	Wall mount Red wire guard with mounting plate, compatible with semi-flush or surface mounted boxes	6-1/16" H x 6-1/16" W x 3-1/8" D (154 mm x 154 mm x 79 mm)
4905-9926 *	Ceiling mount Red wire guard with mounting plate, compatible with semi-flush or surface mounted boxes	6-1/8" x 4-3/8" x 2-7/8" deep (156 mm x 111 mm x 73 mm)

\* UL listed by Space Age Electronics Inc.

## Strobe Specifications

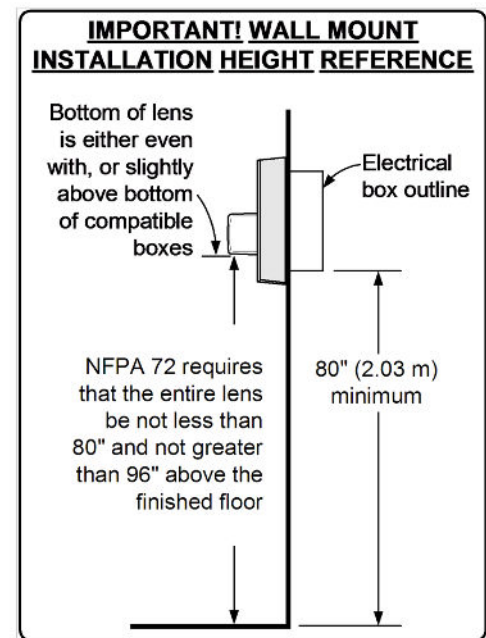
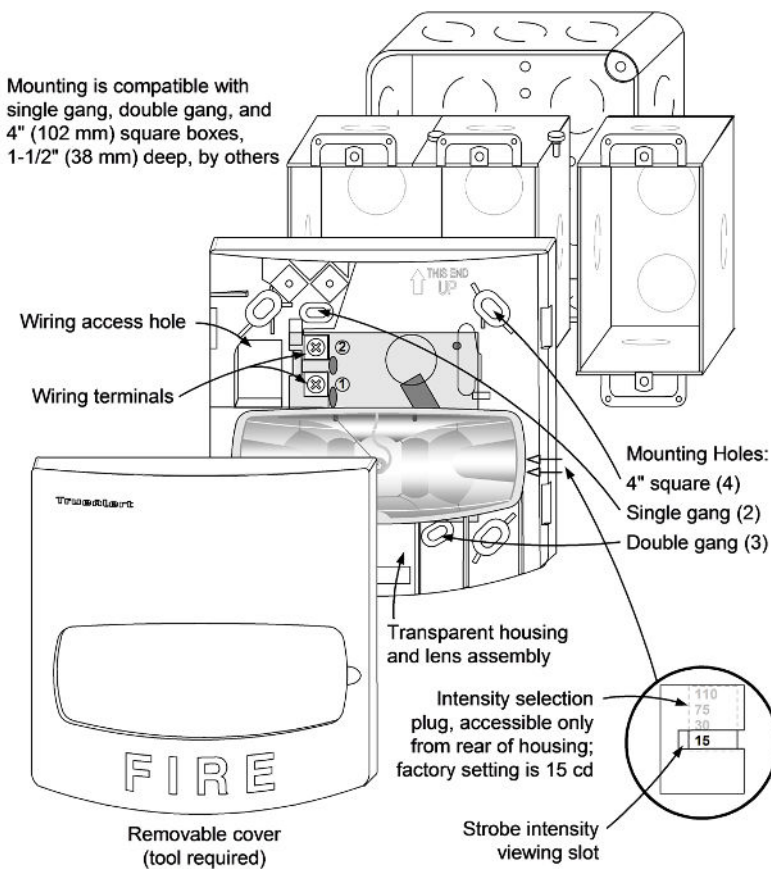
**Table 6: Wall Mount or Ceiling Mount, Common Specifications**

Specification		Rating			
Rated Voltage Range		Regulated 24 VDC; see Note 1 below			
Flash Rate		1 Hz			
Synchronized NAC Loading		Up to 35 synchronized strobes maximum per NAC			
Temperature Range		32° to 122° F (0° to 50° C)			
Humidity Range		10% to 93%, non-condensing at 100° F (38° C)			
Connections		Terminal blocks for 18 AWG to 12 AWG (0.82 mm <sup>2</sup> to 3.31 mm <sup>2</sup> ); two wires per terminal for in/out wiring			
<b>Wall Mount</b>	Housing Dimensions (with lens)	5-1/8" H x 5" W x 2-3/4" D (130 mm x 127 mm x 70 mm)			
	Maximum RMS Current Rating per Strobe Setting (see Note 2 below)	15 cd	30 cd	75 cd	110 cd
		60 mA	94 mA	186 mA	252 mA
	Reference RMS Currents at other voltages	18 VDC	53 mA	84 mA	165 mA
24 VDC		40 mA	63 mA	124 mA	168 mA
<b>Ceiling Mount</b>	Housing Dimensions (with lens)	4-3/4" L x 2-5/16" W x 2-5/8" D (121 mm x 75 mm x 67 mm)			
	Maximum RMS Current Rating per Strobe Setting (see Note 2 below)	15 cd	30 cd	75 cd	110 cd
		75 mA	125 mA	233 mA	316 mA
	Reference RMS Currents at other voltages	18 VDC	67 mA	111 mA	207 mA
24 VDC		50 mA	83 mA	155 mA	211 mA

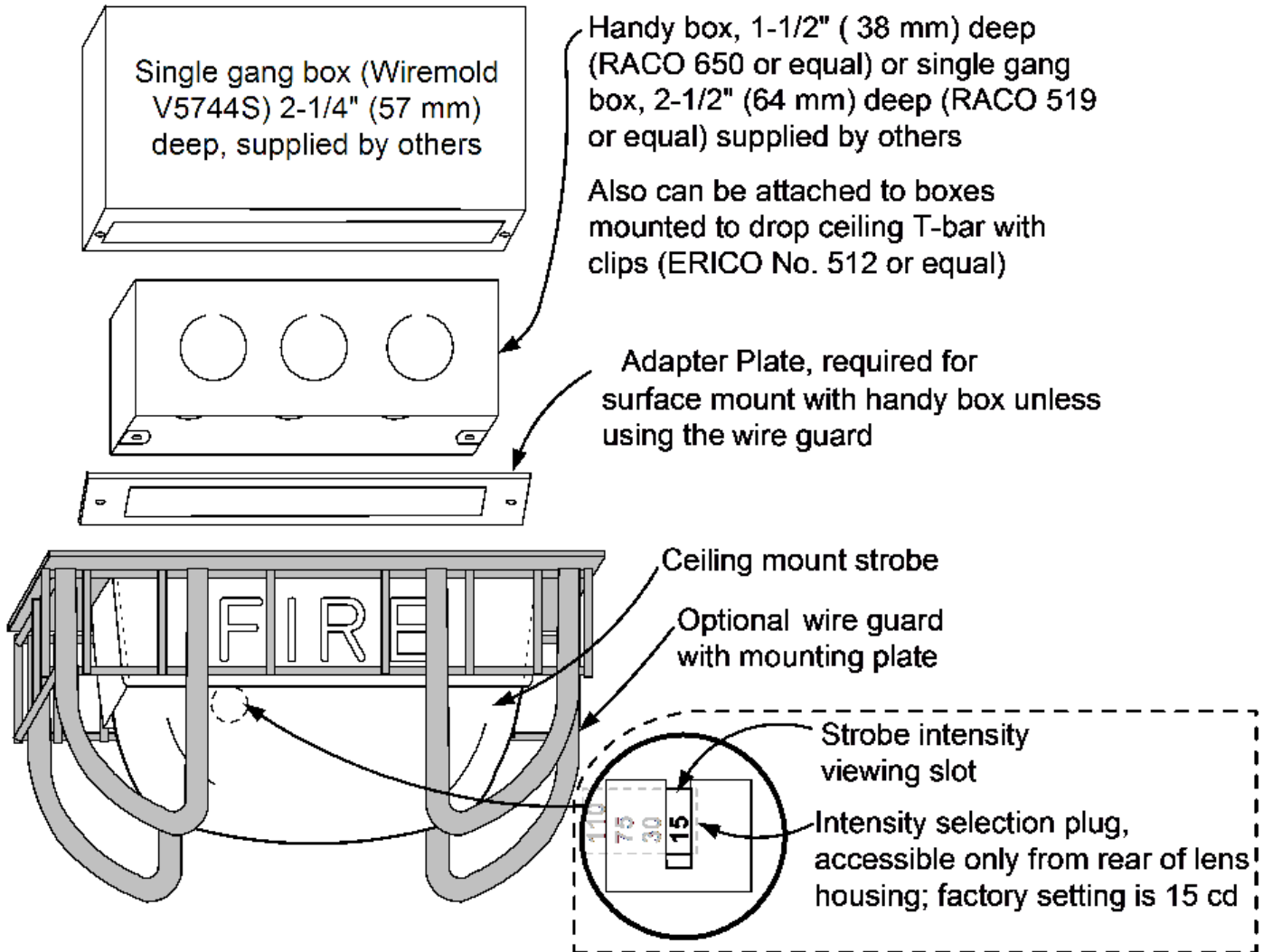
**Note:**

- "Regulated 24 VDC" refers to the voltage range of 16 to 33 VDC per UL Standard 1971, *Signaling Devices for the Hearing Impaired*. This voltage range is the absolute operating range. Operation outside of this range may cause permanent damage to the strobe. Please note that 16 VDC is the lowest operating voltage that is allowed at the last appliance on the NAC under worst case conditions.
- The maximum RMS current listed is the device nameplate rating. Strobe designs are constant wattage and the maximum RMS current rating occurs at the lowest allowable operating voltage. (RMS is root mean square and refers to the effective value of a varying current waveform.)

## Installation Reference, Surface or Semi-Flush Wall Mounting



Ceiling Mount Strobe Installation Reference



**Note:**

1. Figure shows 4905-9910 Adaptor Plate.
2. \*\* 4905-9926 Wire guard shown

Wall Mount Installation Reference; Adapter Plate, Guard, and Adapter Skirt

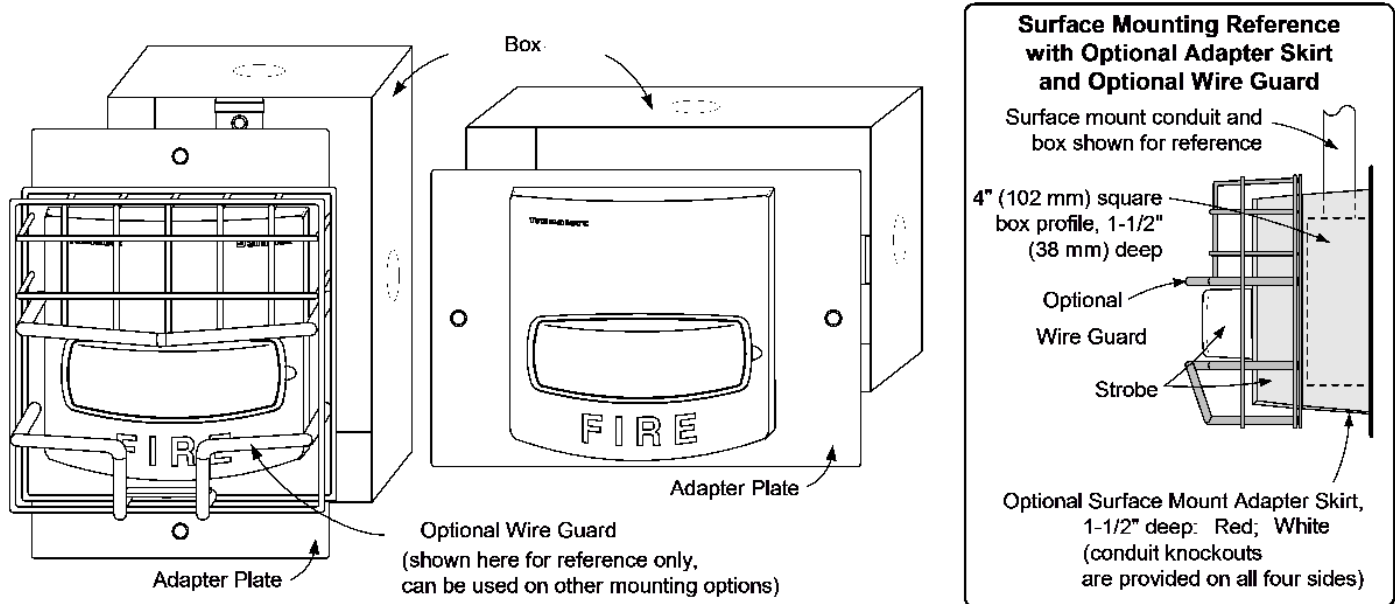


Figure 3: Wall Mount Installation Reference; Adapter Plate, Guard, and Adapter Skirt

**Note:**

Figure 3 shows:

- 4905-9931 Adapter Plate
- 2975-9145 Box
- 4905-9961 Optional Wire Guard
- Optional Surface Mount Adapter skirt:
  - Red: 4905-9937
  - White: 4905-9940

